

# DAW / LCD Stand

## *From* Sterling Modular Systems



We have redesigned our DAW / LCD stand to be more functional, more attractive, and less expensive.

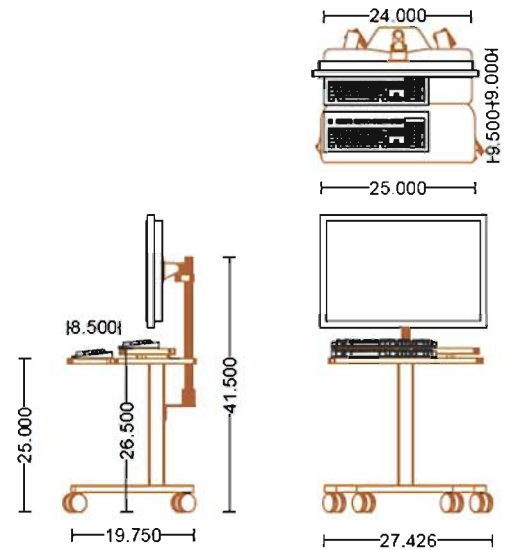
In order to keep costs down, we redesigned the lcd mounting system, (without compromising on the quality), and we offer the stand with casters only.

We made the lower keyboard shelf wider (25") and deeper (9-1/2"). The shelf edges are now covered with a more attractive and durable rubber edging.

The stand is still supported by a welded steel base that is coated with a durable texture finish.

The Heavy duty LCD assembly allows the monitor(s) to be raised and lowered, and also allows the monitor to pivot up, down, and side to side. The Dual monitor arm assembly can easily hold up to 2 - 19" Cinema displays.

The single LCD configuration easily holds a 30" Apple (or other) Cinema

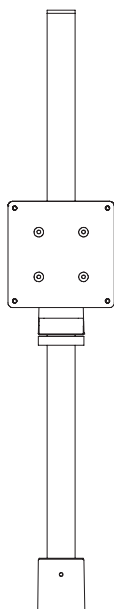


Sterling Modular Systems, Inc  
 704 East 4th Street Boyertown, PA 19512  
 610-369-5802  
[www.sterlingmodular.com](http://www.sterlingmodular.com)

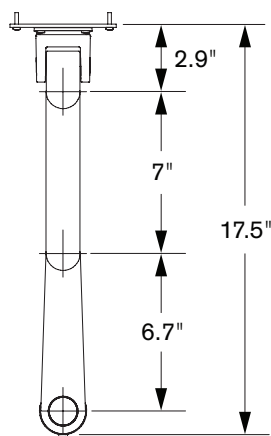


# Model 9130

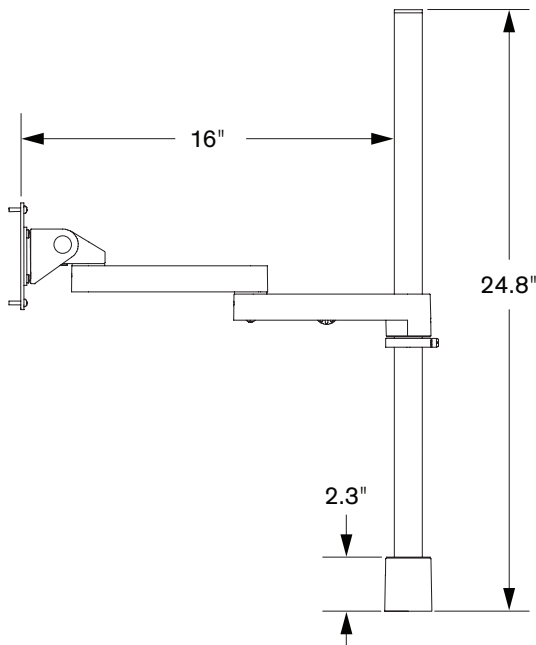
## Specifications



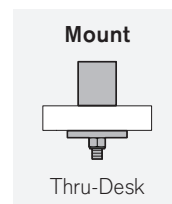
**FRONT VIEW**



**TOP VIEW**



**SIDE VIEW**



### CAPABILITIES

Horizontal range.....	16"
Pole height.....	24"
Monitor tilt.....	200 degrees
Monitor pivot.....	Landscape to portrait
Monitor compatibility.....	VESA® 75mm and 100mm
Monitor weight.....	Up to 40 lbs per monitor



Phone: 800.524.2744 | Fax: 610.253.9521 | E-mail: [sales@LCDarms.com](mailto:sales@LCDarms.com) | Web: [www.LCDarms.com](http://www.LCDarms.com)

This product is protected by one or more of the following U.S. Patent Nos. and other United States and foreign patents applied for: 119,345, 119,346, 1,324,842, 2,470,525, 6,076,785, 6,273,383, 6,409,134, 6,478,274, 6,499,704, 6,505,988, 6,609,691, 6,19,606, 6,719,253, 6,726,167, 6,736,364, 6,783,105, 6,854,698, 6,915,994, 6,935,883, 6,955,328, 6,983,917, 6,986,489, 7,014,157, 7,017,874, 7,048,242, 7,059,574, 7,063,296, 7,066,433, 7,066,435, 7,389,965, 7,665,699, D435,852, D491,952, D492,893, D670,853, D675,293.