

API 1608

"Pro Series" Console Accessories

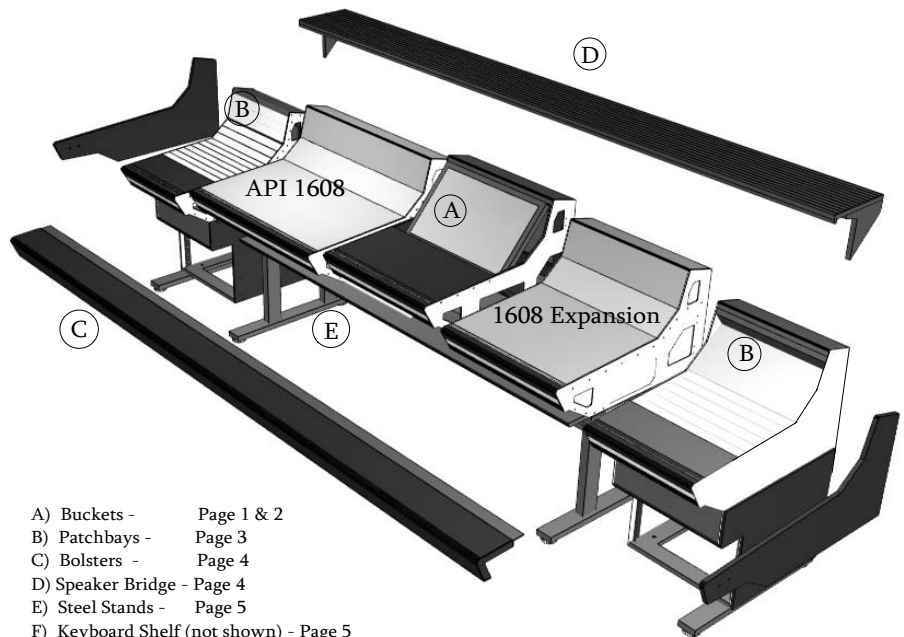
By Sterling Modular Systems



Beautifully appointed accessories designed specifically to blend seamlessly with the API 1608 Consoles.

In appearance and function, these add-on components will provide you with all of the tools and conveniences to make your API function flawlessly.

Sterling Modular is the "ONLY" furniture manufacturer that employs this "factory feature" approach to console enhancement. We look forward to building your studio "centerpiece"



- A) Buckets - Page 1 & 2
- B) Patchbays - Page 3
- C) Bolsters - Page 4
- D) Speaker Bridge - Page 4
- E) Steel Stands - Page 5
- F) Keyboard Shelf (not shown) - Page 5

Sterling Modular Systems,inc
704 East 4th Street, Boyertown PA 19512
610-369-5802
www.sterlingmodular.com



API 1608

"Pro Series" Console Accessories

By Sterling Modular Systems

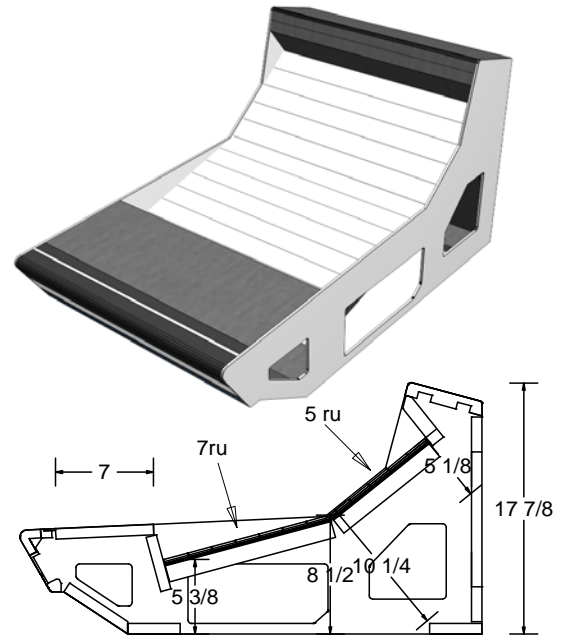
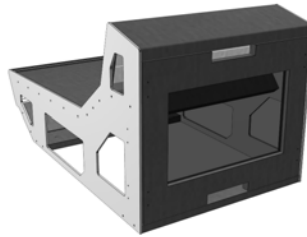
Console Buckets

Bucket 1

Pro Series Console Buckets are designed to provide you with a number of configurations for convenient racking of electronics or patchbays as well as various sizes of writing surfaces, producer desks and DAWs.

Shown here are only a few of the possibilities. As always, our design team is available to provide custom solutions to fit your specific applications and needs.

Bucket 1 is a 12ru configuration and is shipped complete with rack rail and rear (vented) access panel (shown Below).
Blank 1ru Rack panels are not included.



Price
\$1999.00

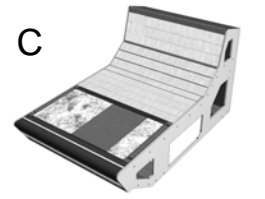
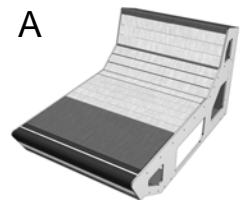
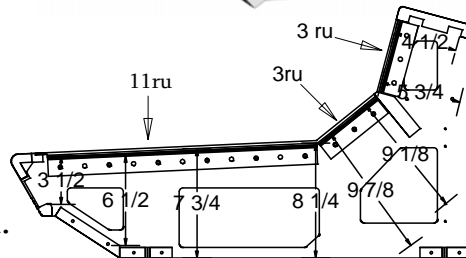
Bucket 2

Bucket 2 is shipped with rack rail for all of the shown options.

- Option A .
7" (4ru) flat writing surface. (included in base price).
- Option B.
19" (11ru) flat writing surface. (see price sheet).
- Option C.
Rack Mount Tray for AVID (Euphonix) MC Series mixers. (see price sheet - Page 7).

Blank 1ru Rack Panels are not included.

Prices start at..
\$1999.00
Please call for more information.



Sterling Modular Systems, inc
704 East 4th Street, Boyertown PA 19512
610-369-5802
www.sterlingmodular.com



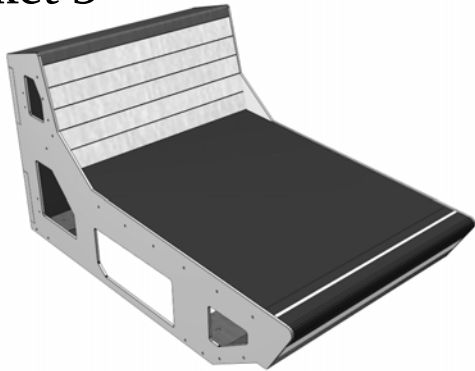
API 1608

"Pro Series" Console Accessories

By Sterling Modular Systems

Console Buckets / Desk Options

Bucket 3



Bucket 3 is a flat surface (21" deep) with 5ru of rack space in the bridge section.
Standard width is 19" but is expandable to 38" or more.
Please contact us for pricing.
**Blank 1ru Rack panels are not included.

"Pro Series" Bucket / Desk Options are designed to give the mixer additional production desk space and provide locations for computer monitoring, keyboard, mouse and writing surface.

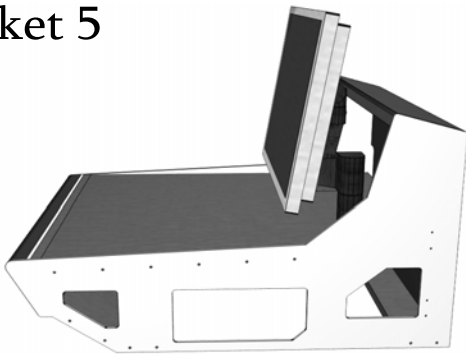
The buckets on this page are only a small sampling of the possible configurations.

The width of these buckets will be determined by the size of the monitor and customer preference.

(NOTE) Adding a bucket will require an extension of the steel support frame, which will incur an upcharge of approximately \$100.00 per bucket.

Please call for more information

Bucket 5



Bucket 5 has an extended desk surface that is the full depth of the bucket. It features pre drilled holes for adding an LCD arm to provide more flexibility for monitor placement. The Standard width of this bucket will be determined by the size of the monitor and/or customer preference. Please call for design assistance and information.
**LCD arm and monitor are not included.

Bucket 4



Bucket 4 has a front writing surface of 12" in depth. There is an inset dropped area for an computer monitor (MAC 24" is shown). The width of this bucket will be determined by the monitor size and/or customer preference. Please call for design information and pricing.
**monitor not included.

Prices for Buckets # 3,4&5 start at \$1999.00 for the 19" wide models.

Prices will vary depending on required width.

Please call for more information.....

Sterling Modular Systems,inc
704 East 4th Street, Boyertown PA 19512
610-369-5802
www.sterlingmodular.com



API 1608

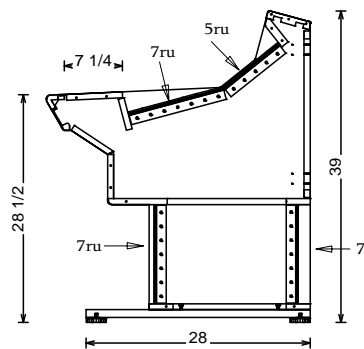
"Pro Series" Console Accessories

By Sterling Modular Systems

Patchbays

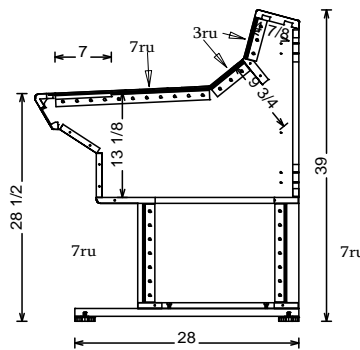
Patchbay 1

Patchbay 1 has a 7" deep writing surface and features 12ru of space that is angled in a classic patchbay configuration.



Patchbay 2

Patchbay 2 has a 7" writing space that can be removed to reveal 5 additional ru of shallow rack space. The racks follow the shape of the API console



- 1) Patchbay cabinets are fabricated with 3/16" aluminum side panels to match the API dividers and console profile.
- 2) The assembly includes a steel foot (with heavy duty levelers) that match the steel legset,
- 3) Rear (removeable) vented panel.
- 4) All components (other than aluminum sides) are black laminate, or durable black texture finish.
- 5) All rack rail is included.
- 6) Machine screws and locking nuts for assembly to 1608 are included.
- 7) Patchbays are shipped assembled.
- 8) Correct installation requires that the side panel of the API 1608 be removed and reinstalled on the outside of the patchbay. The patchbay is to be secured to the 1608 with the supplied hardware.
- 9) Patchbay nose and aluminum trim match API Nose and trim.

List Prices....
 Patchbay 1.....\$2729.00
 Patchbay 2.....\$2629.00

Sterling Modular Systems,inc
 704 East 4th Street, Boyertown PA 19512
 610-369-5802
 www.sterlingmodular.com



API 1608

"Pro Series" Console Accessories

By Sterling Modular Systems

Padded Bolster / Speaker Bridge

Padded Bolster

A) The Bolster is 4" h x 6 1/2" deep and covered with 1/4" foam padding under a high grade, durable vinyl.

B) A 2" wide black aluminum strip separates the bolster from the console body. (handy for track strips)

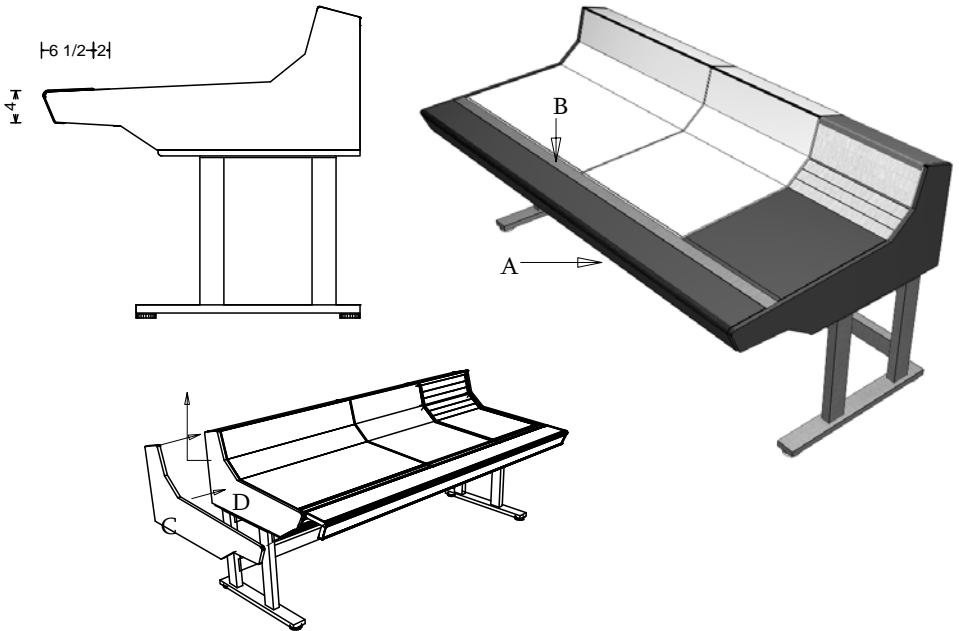
C) The Bolster assembly comes complete with 2 extended black console end panels that support the bolster. These panels match the API side panels but can be ordered in a variety of wood species. (The API end panels "D" are removed).

(NOTE) Bolster assembly must be ordered at the same time as buckets or patchbays, (due to assembly support considerations).

Prices start at

\$1199.00 for API 1608

Call for additional pricing info.



Speaker Bridge

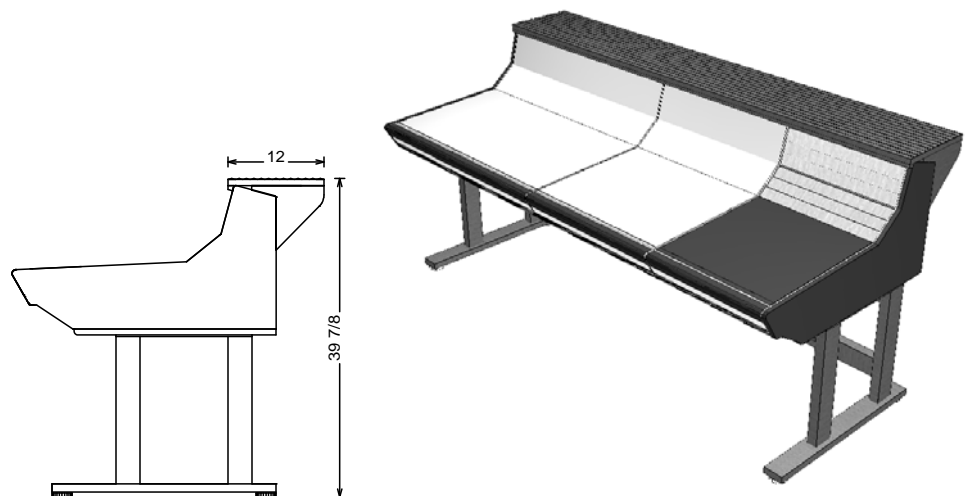
The Speaker Bridge is 12" deep x the full length of the console (1608 with expansion and Bucket 1 is shown to the right) and is fabricated using 3/4" Melamine coated mdf, (which is used to reduce resonance) and covered with a 1/8" thick ribbed rubber. It is designed to rest on the bridge of the console and should be secured using the screws supplied.

Prices start at..

API 1608\$635.00

API 1608 with Exp....\$735.00

Call for additional pricing info.



Sterling Modular Systems,inc
704 East 4th Street, Boyertown PA 19512
610-369-5802
www.sterlingmodular.com

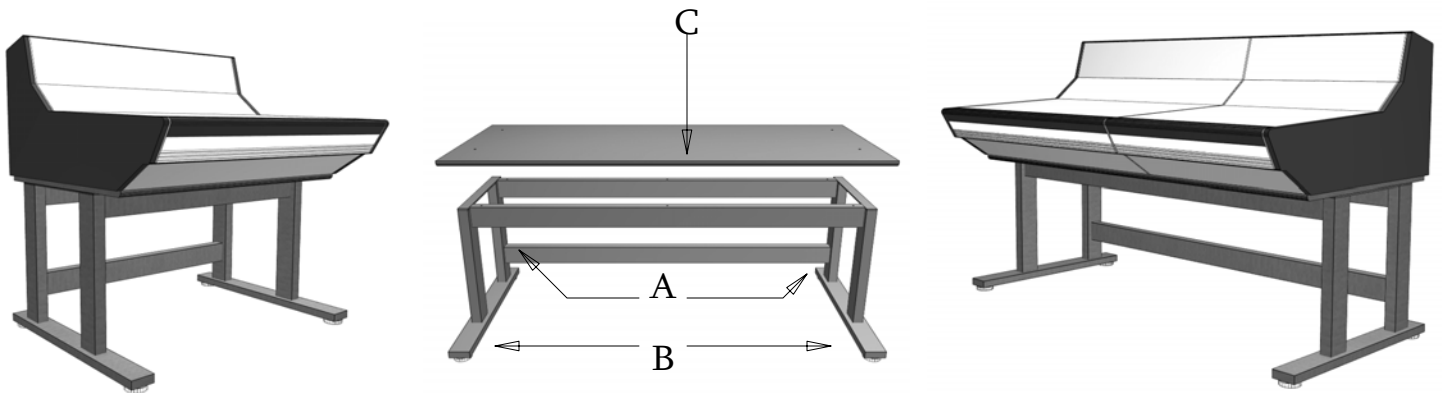


API 1608

"Pro Series" Console Accessories

By Sterling Modular Systems

Steel Stand



The Steel Frame is fabricated to provide a sturdy, worry free platform for the API 1608.

- A) 1 1/2" x 3" x .083 Steel rectangular tube legs and horizontal support rails.
- B) 1 x 3 x .083 Steel rectangular tube feet, fitted with 2 1/2" HD levelers.
- C) The 1608 rests securely on a top platform that is fabricated using 3/4" melamine coated MDF with a durable texture edge finish.
- D) All steel tube is filled with fiberglass fill to prevent any ping or acoustical resonance.

New - Reduced Retail Pricing

API 1608	\$1199.00
API 1608 w/ Exp	\$1349.00

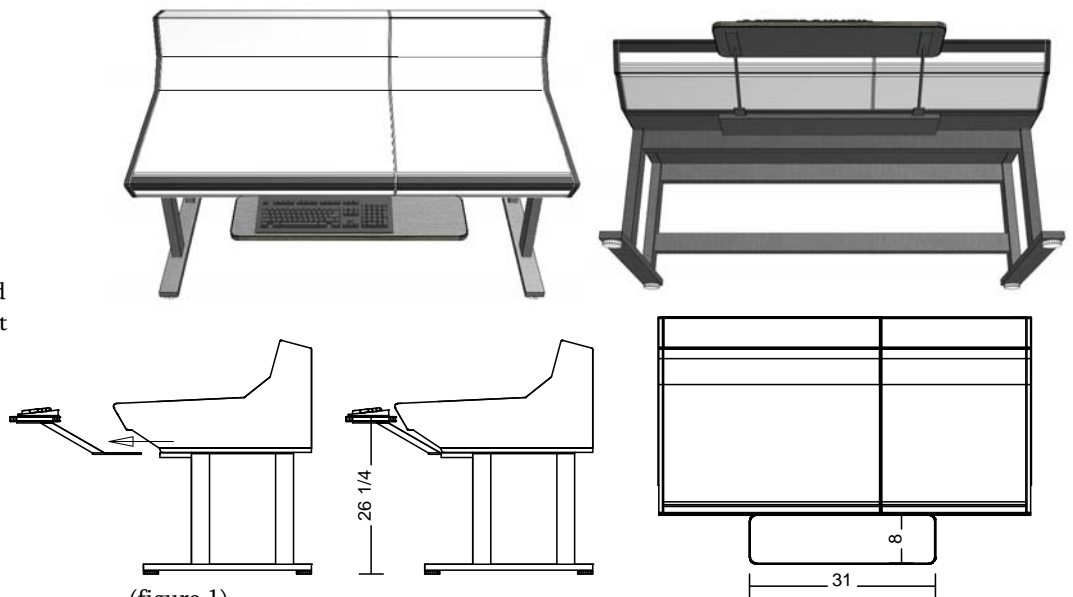
Keyboard Tray

The Keyboard Tray platform is 3/4" thick, melamine coated mdf with a 1/8" thick rubber edge.

The Brackets are welded 1/4" steel to provide the support that is needed for the extended cantilever.

The supports are secured to the keyboard tray and the tray assembly can be removed from the console frame by simply sliding it out (fig 1).

All mounting holes are pre drilled into every frame platform to make installation easy as an original accessory or as a late add-on.



(figure 1)

Retail Price
\$389.00

Sterling Modular Systems,inc
704 East 4th Street, Boyertown PA 19512
610-369-5802
www.sterlingmodular.com

